



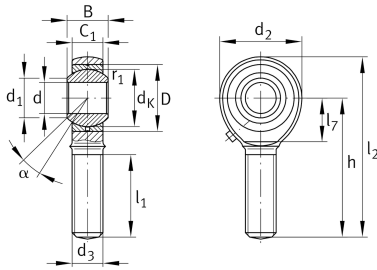
## GAKL10-PB-A

Rod end

Schaeffler ID:  
0066333070000

Rod end with external thread, left hand thread, requiring maintenance, sliding contact surface: steel/bronze, DIN ISO 12240-4, dimension series K, type M, open design

### Technical information



### Main Dimensions & Performance Data

d	10 mm	Bore diameter bearing
D	22 mm	Outside diameter bearing
B	14 mm	Width inner ring
C <sub>r</sub>	10,000 N	Basic dynamic load rating, radial
C <sub>0r</sub>	18,500 N	Basic static load rating, radial
	0.06 kg	Weight

### Dimensions

d <sub>K</sub>	19.05 mm	Ball diameter
d <sub>1</sub>	12.9 mm	Outer flange diameter inner ring
d <sub>2</sub>	28 mm	Outer eye diameter
d <sub>3</sub>	M10	Thread size
h	48 mm	Shank Length External thread rod
C <sub>1</sub>	10.5 mm	Width of the rod end
α	13 °	Tilt angle
l <sub>1</sub>	28 mm	Shank Length External thread head
l <sub>2</sub>	62 mm	Total length external thread head
G <sub>r</sub>	0 - 0,035 mm	Radial Clearance
d <sub>OT</sub>	0.015 mm	Bore diameter bearing, upper tolerance
d <sub>UT</sub>	0 mm	Bore diameter bearing, lower tolerance
d <sub>T</sub>	H7 mm	Bore diameter bearing, tolerance
B <sub>OT</sub>	0 mm	Width inner ring, upper tolerance
B <sub>UT</sub>	-0.12 mm	Width inner ring, lower tolerance

### Mounting dimensions

r <sub>1smin</sub>	0.3 mm	Edge Spacing
--------------------	--------	--------------

### Temperature range

T <sub>min</sub>	-60 °C	Operating temperature min.
T <sub>max</sub>	250 °C	Operating temperature max.